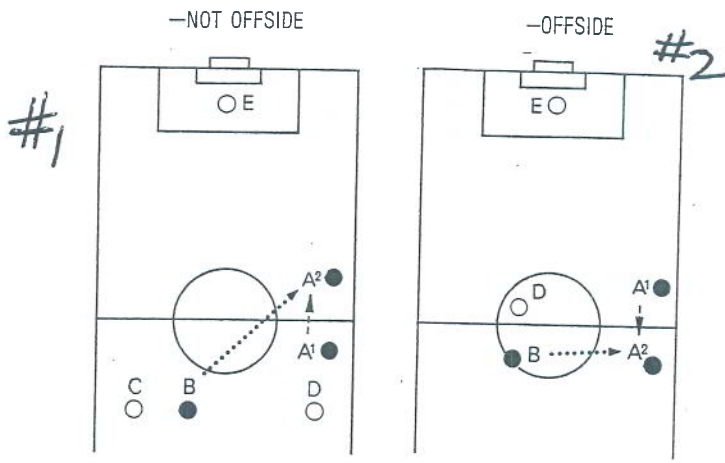


MTG: 9/17/12

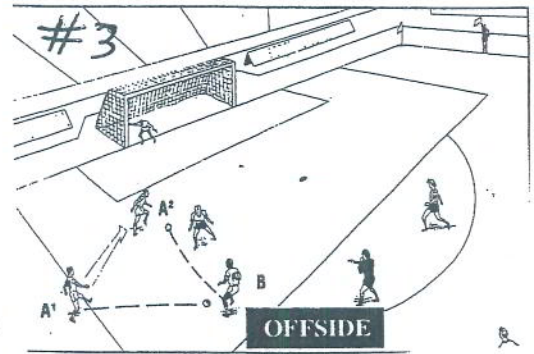
Offsides

- #1) "own"
- #2) "off to on"
- #3) "last FB"
- #4) "behind the ball"

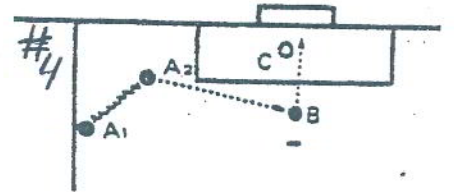


A player within his/her own half of the field of play is not offside when entering the opponents' half of the field of play.

A player cannot put him/herself onside by running back into his/her own half of the field of play.



-NOT OFFSIDE

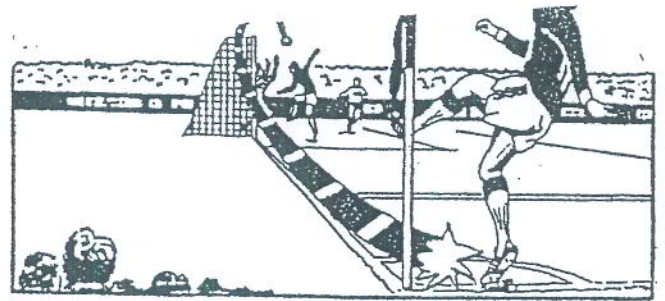


Crossing ball from near goal line

| | | |
|-----------------------|-----------------|--|
| | ◀ HEAD COACH ▶ | |
| | ◀ ASST. COACH ▶ | |
| | ◀ ASST. COACH ▶ | |
| | ◀ MANAGER ▶ | |
| GAME OFFICIALS | | |
| REFEREE (1) | | |
| REFEREE (2) | | |

EVERYBODY

EVERYBODY

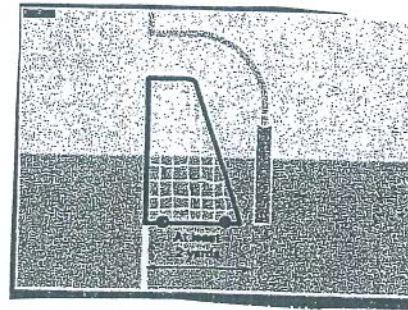


WHICH TEAM IS ALLOWED TO CALL A TIME-OUT?
EITHER TEAM

THINK!

Officials shall remain mindful that their conduct influences the respect that student-athletes, coaches and the public hold for the profession.

THE ROCK



"OFF THE POST"

3-3-2 (a) — When coaches or medical personnel are permitted on the field to attend to an injured player, coaching instruction shall not be given to players of either team. This is to eliminate using injuries as coaching "time-outs". The Committee emphasizes that the purpose of attending to an injured player is the primary concern of the coaching.

TONE + Demeanor.



"ATTEMPT TO STRIKE"



"FOR YOUR EYES ONLY"



"UP LOOKS GOOD"



"YOUR PARTNER"

